

Convert It! Index

The Index lists all Help topics available for Convert It!. Index items are arranged alphabetically within each category. Use the scroll bar to see entries not currently visible in the Help window. Topics new to this release are preceded by "♦".

To learn how to use Help, press F1 or choose Using Help from the Help menu.

Registration

[How to Register Convert It!](#)

Keyboard

[Convert It! Keys](#)

Commands

[Conversion Menu](#)

[Angle Conversion Command](#)

[Area Conversion Command](#)

♦ [Custom Conversion Command](#)

♦ [Density Conversion Command](#)

[Energy Conversion Command](#)

♦ [Force Conversion Command](#)

[Length and Distance Conversion Command](#)

[Mass Conversion Command](#)

♦ [Money Conversion Command](#)

[Power Conversion Command](#)

[Pressure Conversion Command](#)

[Temperature Conversion Command](#)

[Time Conversion Command](#)

♦ [Velocity Conversion Command](#)

[Volume Conversion Command](#)

[File Menu](#)

♦ [Units Menu](#)

Procedures

♦ [Changing Conversion Factors](#)

♦ [Changing Conversion Units](#)

[Command Buttons](#)

[Control Menu Commands](#)

[Entering an Initial Value](#)

[Exiting Convert It!](#)

[Moving Within a Conversion Tool](#)

[Opening the Control Menu](#)

[Option Buttons](#)

[Quitting a Conversion Tool](#)

[Starting a Conversion Tool](#)

[Using Scroll Bars](#)

Background

[Weights and Measures](#)

Tables

[Metric System](#)

[Temperature Conversions](#)

Metric to Customary Conversion Factors
Customary to Metric Conversion Factors
General Conversion Factors

Glossary

Convert It! Glossary

Convert It! Commands

To get help with a particular command, choose the appropriate menu. Commands new to this release are preceded by "◆".

Conversion Commands

Temperature

Distance

Mass

Area

Volume

Angle

Power

Energy

Pressure

Time

- ◆ Force
- ◆ Density
- ◆ Velocity
- ◆ Money
- ◆ Custom

◆ Units Commands

◆ Distance

◆ Mass

◆ Area

◆ Angle

◆ Volume

◆ Power

◆ Energy

◆ Pressure

◆ Time

◆ Force

◆ Density

◆ Velocity

◆ Money

◆ Custom

File Menu Commands

Exit

About

Conversion Menu Commands

The following are the commands available on the Conversion menu. Commands new to this release are preceded by "◆".



Temperature

Opens a dialog box showing an input area for the initial temperature you want to convert. It has a set of option buttons to indicate what units the initial temperature is in. Units provided are Fahrenheit, Celsius, and Kelvin. Once you have an initial temperature you can use the scroll bar to change the temperature displayed in the Equivalent Temperature box. The EXIT button will exit the dialog.



Distance

Opens a dialog box showing an input area for the initial length or distance you want to convert. It has a set of option buttons to indicate what units the initial length or distance is in. Units provided include inches, feet, yards, miles, centimeters, meters, kilometers, and light years. Once you have an initial length you can use the scroll bar to change the length displayed in the Equivalent Distance box. The EXIT button will exit the dialog.



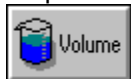
Mass

Opens a dialog box showing an input area for the initial mass you want to convert. It has a set of option buttons to indicate what units the initial mass is in. Units provided include ounces, pounds, grams, kilograms, and tons. Once you have an initial mass you can use the scroll bar to change the mass displayed in the Equivalent Mass box. The EXIT button will exit the dialog.



Area

Opens a dialog box showing an input area for the initial area you want to convert. It has a set of option buttons to indicate what units the initial area is in. Units provided include square inches, square feet, acres, square centimeters, square meters, and hectares. Once you have an initial area you can use the scroll bar to change the area displayed in the Equivalent Area box. The EXIT button will exit the dialog.



Volume

Opens a dialog box showing an input area for the initial volume you want to convert. It has a set of option buttons to indicate what units the initial volume is in. Units included are fluid ounces, pints, gallons, and liters. Once you have an initial volume you can use the scroll bar to change the volume displayed in the Equivalent Volume box. The EXIT button will exit the dialog.



Angle

Opens a dialog box showing an input area for the initial angle you want to convert. It has a set of option buttons to indicate what units the initial angle is in. Some of the provided units are radians, degrees, revolutions, grades, and mils. Once you have an initial angle you can use the scroll bar to change the angle displayed in the Equivalent Angle box. The EXIT button will exit the dialog.



Power

Opens a dialog box showing an input area for the initial power you want to convert. It has a set of option buttons to indicate what units the initial power is in. Included units are

horsepower (both metric and conventional), Watts, and calories per hour. Once you have an initial power you can use the scroll bar to change the power displayed in the Equivalent Power box. The EXIT button will exit the dialog.



Energy

Opens a dialog box showing an input area for the initial energy you want to convert. It has a set of option buttons to indicate what units the initial energy is in. Some of the units included are joules, electron-volts, calories, and Btu's. Once you have an initial energy you can use the scroll bar to change the energy displayed in the Equivalent Energy box. The EXIT button will exit the dialog.



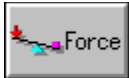
Pressure

Opens a dialog box showing an input area for the initial pressure you want to convert. It has a set of option buttons to indicate what units the initial pressure is in. Units provided include, inches of mercury, atmospheres, pascals, and bars. Once you have an initial pressure you can use the scroll bar to change the pressure displayed in the Equivalent Pressure box. The EXIT button will exit the dialog.



Time

Opens a dialog box showing an input area for the initial time you want to convert. It has a set of option buttons to indicate what units the initial time is in. Some of the units provided are seconds, minutes, hours, days, months, and years. Once you have an initial time you can use the scroll bar to change the time displayed in the Equivalent Time box. The EXIT button will exit the dialog.



Force

Opens a dialog box showing an input area for the initial time you want to convert. It has a set of option buttons to indicate what units the initial time is in. Units used include dynes, newtons, and poundals. Once you have an initial time you can use the scroll bar to change the time displayed in the Equivalent Time box. The EXIT button will exit the dialog.



Density

Opens a dialog box showing an input area for the initial time you want to convert. It has a set of option buttons to indicate what units the initial time is in. A few of the included units are kilograms per cubic meter, grams per cubic meter, ounces per cubic foot and pounds per cubic foot. Once you have an initial time you can use the scroll bar to change the time displayed in the Equivalent Time box. The EXIT button will exit the dialog.



Velocity

Opens a dialog box showing an input area for the initial time you want to convert. It has a set of option buttons to indicate what units the initial time is in. Some of the units are meters per second, kilometers per hour, miles per hour, knots, and Mach number. Once you have an initial time you can use the scroll bar to change the time displayed in the Equivalent Time box. The EXIT button will exit the dialog.



Money

Opens a dialog box showing an input area for the initial time you want to convert. It has a set of option buttons to indicate what units the initial time is in. Provided units includes U.S. dollars, German marks, Japanese yen, and the British pound. Once you have an initial time you can use the scroll bar to change the time displayed in the Equivalent Time box.

The EXIT button will exit the dialog.



◆ **Custom**

Opens a dialog box showing an input area for the value you want to convert. It has a set of option buttons to indicate what units the initial value is in. Once you have an initial value you can use the scroll bar to change the value displayed in the Equivalent box. You can use this group for any group of related conversions that you wish and are not included in the 14 standard ones. The EXIT button will exit the dialog.

Temperature Command



This dialog box has several controls. New features are highlighted in **red**.

Initial Temperature:

This text box shows the current temperature that is converted in the Equivalent Temperature box. By entering a new value here you can convert any temperature to its equivalent in another scale.

Initial Temp. is in:

This group of option buttons allows you to indicate what scale the value in the Initial Temperature text box is in. This allows the tool to properly convert to the other scales.

Equivalent Temps.:

This box contains an entry for each temperature scale. The scale indicated by the Initial Temp is in: option button is the one that is controlled by the Initial Temperature text box and the scroll bar.

Temperature Scroll Bar:

Using this scroll bar can change the temperature indicated by the Initial Temp. is in: option buttons. Pressing one of the scroll arrows will change the temperature by one degree. Clicking on the gray area to the right or left of the scroll box (or pressing page up or page down) will change the temperature by 10 degrees. Initially the scroll bar will top out at about 20000 degrees, however you can increase this limit by entering a new larger value in the Initial Temperature text box. The scroll range will be increased to two times the value entered.

Copy button:

This button allows you to copy the currently marked value to the clipboard. From there it can be pasted into many different applications. You can also perform this same function by pressing Ctrl-Ins when the cursor is on one of the fields.

Paste button:

This button allows you to paste the contents of the clipboard into the Initial value field. No data validation is performed. The Initial value field is the only field which can be pasted into. When the cursor is on any other field this button will be disabled. The button will also be disabled whenever there is nothing in the clipboard.

When you have finished you can press the Exit button to return to the main window. Pressing the Help button will get you this help topic.

For background information see [Temperature](#)

Distance Command



This dialog box has several controls. New features are highlighted in **red**.

Initial Distance:

This text box shows the current distance that is converted in the Equivalent Distance box. By entering a new value here you can convert any distance to its equivalent in another scale.

Initial Dist. is in:

This group of option buttons allows you to indicate what scale the value in the Initial Distance text box is in. This allows the tool to properly convert to the other scales.

Equivalent Distances:

This box contains an entry for each distance scale. The scale indicated by the Initial Dist. is in: option button is the one that is controlled by the Initial Distance text box and the scroll bar.

Distance Scroll Bar:

Using this scroll bar you can change the temperature indicated by the Initial Dist. is in: option buttons. Pressing one of the scroll arrows will change the distance by one unit. Clicking on the gray area to the right or left of the scroll box (or pressing page up or page down) will change the distance by 10 units. Initially the scroll bar will top out at about 20000 units, however you can increase this limit by entering a new larger value in the Initial Distance text box. The scroll range will be increased to two times the value entered.

Copy button:

This button allows you to copy the currently marked value to the clipboard. From there it can be pasted into many different applications. You can also perform this same function by pressing Ctrl-Ins when the cursor is on one of the fields.

Paste button:

This button allows you to paste the contents of the clipboard into the Initial value field. No data validation is performed. The Initial value field is the only field which can be pasted into. When the cursor is on any other field this button will be disabled. The button will also be disabled whenever there is nothing in the clipboard.

Factors button:

This button allows you change the conversion factors for any combination of units shown in the dialog. If you do change any conversion factors, when you try to exit the dialog, Convert It! will remind you that you made a change and ask if you wish to save the changes.

When you have finished you can press the Exit button to return to the main window. Pressing the Help button will get you this help topic.

For background information see [Length and Distance](#)

Also see [Factors Dialog](#)

Mass Command



This dialog box has several controls. New features are highlighted in **red**.

Initial Mass:

This text box shows the current mass that is converted in the Equivalent Mass box. By entering a new value here you can convert any mass to its equivalent in another scale.

Initial Mass is in:

This group of option buttons allows you to indicate what scale the value in the Initial Mass text box is in. This allows the tool to properly convert to the other scales.

Equivalent Mass:

This box contains an entry for each mass scale. The scale indicated by the Initial Mass is in: option button is the one that is controlled by the Initial Mass text box and the scroll bar.

Mass Scroll Bar:

Using this scroll bar can change the mass indicated by the Initial Mass is in: option buttons. Pressing one of the scroll arrows will change the mass by one unit. Clicking on the gray area to the right or left of the scroll box (or pressing page up or page down) will change the mass by 10 units. Initially the scroll bar will top out at about 20000 units, however you can increase this limit by entering a new larger value in the Initial Mass text box. The scroll range will be increased to two times the value entered.

Copy button:

This button allows you to copy the currently marked value to the clipboard. From there it can be pasted into many different applications. You can also perform this same function by pressing Ctrl-Ins when the cursor is on one of the fields.

Paste button:

This button allows you to paste the contents of the clipboard into the Initial value field. No data validation is performed. The Initial value field is the only field which can be pasted into. When the cursor is on any other field this button will be disabled. The button will also be disabled whenever there is nothing in the clipboard.

Factors button:

This button allows you change the conversion factors for any combination of units shown in the dialog. If you do change any conversion factors, when you try to exit the dialog, Convert It! will remind you that you made a change and ask if you wish to save the changes.

When you have finished you can press the Exit button to return to the main window. Pressing the Help button will get you this help topic.

For background information see [Weight and Mass](#)

Also see [Factors Dialog](#)

Volume Command



This dialog box has several controls. New features are highlighted in **red**.

Initial Volume:

This text box shows the current volume that is converted in the Equivalent Volume box. By entering a new value here you can convert any volume to its equivalent in another scale.

Initial Volume is in:

This group of option buttons allows you to indicate what scale the value in the Initial Volume text box is in. This allows the tool to properly convert to the other scales.

Equivalent Volume:

This box contains an entry for each volume scale. The scale indicated by the Initial Volume is in: option button is the one that is controlled by the Initial Volume text box and the scroll bar.

Volume Scroll Bar:

Using this scroll bar can change the volume indicated by the Initial Volume is in: option buttons. Pressing one of the scroll arrows will change the volume by one unit. Clicking on the gray area to the right or left of the scroll box (or pressing page up or page down) will change the volume by 10 units. Initially the scroll bar will top out at about 20000 units, however you can increase this limit by entering a new larger value in the Initial Volume text box. The scroll range will be increased to two times the value entered.

Copy button:

This button allows you to copy the currently marked value to the clipboard. From there it can be pasted into many different applications. You can also perform this same function by pressing Ctrl-Ins when the cursor is on one of the fields.

Paste button:

This button allows you to paste the contents of the clipboard into the Initial value field. No data validation is performed. The Initial value field is the only field which can be pasted into. When the cursor is on any other field this button will be disabled. The button will also be disabled whenever there is nothing in the clipboard.

Factors button:

This button allows you change the conversion factors for any combination of units shown in the dialog. If you do change any conversion factors, when you try to exit the dialog, Convert It! will remind you that you made a change and ask if you wish to save the changes.

When you have finished you can press the Exit button to return to the main window. Pressing the Help button will get you this help topic.

For background information see [Volume and Capacity](#)

Also see [Factors Dialog](#)

Area Command



This dialog box has several controls. New features are highlighted in **red**.

Initial Area:

This text box shows the current area that is converted in the Equivalent Area box. By entering a new value here you can convert any area to its equivalent in another scale.

Initial Area is in:

This group of option buttons allows you to indicate what scale the value in the Initial Area text box is in. This allows the tool to properly convert to the other scales.

Equivalent Area:

This box contains an entry for each area scale. The scale indicated by the Initial Area is in: option button is the one that is controlled by the Initial Area text box and the scroll bar.

Area Scroll Bar:

Using this scroll bar can change the area indicated by the Initial Area is in: option buttons. Pressing one of the scroll arrows will change the area by one unit. Clicking on the gray area to the right or left of the scroll box (or pressing page up or page down) will change the area by 10 units. Initially the scroll bar will top out at about 20000 units, however you can increase this limit by entering a new larger value in the Initial Area text box. The scroll range will be increased to two times the value entered.

Copy button:

This button allows you to copy the currently marked value to the clipboard. From there it can be pasted into many different applications. You can also perform this same function by pressing Ctrl-Ins when the cursor is on one of the fields.

Paste button:

This button allows you to paste the contents of the clipboard into the Initial value field. No data validation is performed. The Initial value field is the only field which can be pasted into. When the cursor is on any other field this button will be disabled. The button will also be disabled whenever there is nothing in the clipboard.

Factors button:

This button allows you change the conversion factors for any combination of units shown in the dialog. If you do change any conversion factors, when you try to exit the dialog, Convert It! will remind you that you made a change and ask if you wish to save the changes.

When you have finished you can press the Exit button to return to the main window. Pressing the Help button will get you this help topic.

For background information see [Surface or Area](#)

Also see [Factors Dialog](#)

Angle Command



This dialog box has several controls. New features are highlighted in **red**.

Initial Angle:

This text box shows the current angle that is converted in the Equivalent Angle box. By entering a new value here you can convert any angle to its equivalent in another scale.

Initial Angle is in:

This group of option buttons allows you to indicate what scale the value in the Initial Angle text box is in. This allows the tool to properly convert to the other scales.

Equivalent Angle:

This box contains an entry for each angle scale. The scale indicated by the Initial Angle is in: option button is the one that is controlled by the Initial Angle text box and the scroll bar.

Angle Scroll Bar:

Using this scroll bar can change the angle indicated by the Initial Angle is in: option buttons. Pressing one of the scroll arrows will change the angle by one unit. Clicking on the gray area to the right or left of the scroll box (or pressing page up or page down) will change the angle by 10 units. The scroll bar will top out at about 20000 units, however you can increase this limit by entering a new larger value in the Initial Area text box. The scroll range will be increased to two times the value entered.

Copy button:

This button allows you to copy the currently marked value to the clipboard. From there it can be pasted into many different applications. You can also perform this same function by pressing Ctrl-Ins when the cursor is on one of the fields.

Paste button:

This button allows you to paste the contents of the clipboard into the Initial value field. No data validation is performed. The Initial value field is the only field which can be pasted into. When the cursor is on any other field this button will be disabled. The button will also be disabled whenever there is nothing in the clipboard.

Factors button:

This button allows you change the conversion factors for any combination of units shown in the dialog. If you do change any conversion factors, when you try to exit the dialog, Convert It! will remind you that you made a change and ask if you wish to save the changes.

When you have finished you can press the Exit button to return to the main window. Pressing the Help button will get you this help topic.

For background information see [Angular Measurements](#)

Also see [Factors Dialog](#)

Power Command



This dialog box has several controls. New features are highlighted in **red**.

Initial Power:

This text box shows the current power that is converted in the Equivalent Power box. By entering a new value here you can convert any power to its equivalent in another unit.

Initial Power is in:

This group of option buttons allows you to indicate what units the value in the Initial Power text box is in. This allows the tool to properly convert to the other units.

Equivalent Power:

This box contains an entry for each power unit. The unit indicated by the Initial Power is in: option button is the one that is controlled by the Initial Power text box and the scroll bar.

Power Scroll Bar:

Using this scroll bar can change the power indicated by the Initial Power is in: option buttons. Pressing one of the scroll arrows will change the power by one unit. Clicking on the gray area to the right or left of the scroll box (or pressing page up or page down) will change the power by 10 units.

Copy button:

This button allows you to copy the currently marked value to the clipboard. From there it can be pasted into many different applications. You can also perform this same function by pressing Ctrl-Ins when the cursor is on one of the fields.

Paste button:

This button allows you to paste the contents of the clipboard into the Initial value field. No data validation is performed. The Initial value field is the only field which can be pasted into. When the cursor is on any other field this button will be disabled. The button will also be disabled whenever there is nothing in the clipboard.

Factors button:

This button allows you change the conversion factors for any combination of units shown in the dialog. If you do change any conversion factors, when you try to exit the dialog, Convert It! will remind you that you made a change and ask if you wish to save the changes.

When you have finished you can press the Exit button to return to the main window. Pressing the Help button will get you this help topic.

For background information see [Power Measurements](#)

Also see [Factors Dialog](#)

Energy Command



This dialog box has several controls. New features are highlighted in **red**.

Initial Energy:

This text box shows the current energy that is converted in the Equivalent Energy box. By entering a new value here you can convert any energy to its equivalent in another unit.

Initial Energy is in:

This group of option buttons allows you to indicate what unit the value in the Initial Energy text box is in. This allows the tool to properly convert to the other units.

Equivalent Energy:

This box contains an entry for each energy unit. The scale indicated by the Initial Energy is in: option button is the one that is controlled by the Initial Energy text box and the scroll bar.

Energy Scroll Bar:

Using this scroll bar can change the energy indicated by the Initial Energy is in: option buttons. Pressing one of the scroll arrows will change the energy by one unit. Clicking on the gray area to the right or left of the scroll box (or pressing page up or page down) will change the energy by 10 units.

Copy button:

This button allows you to copy the currently marked value to the clipboard. From there it can be pasted into many different applications. You can also perform this same function by pressing Ctrl-Ins when the cursor is on one of the fields.

Paste button:

This button allows you to paste the contents of the clipboard into the Initial value field. No data validation is performed. The Initial value field is the only field which can be pasted into. When the cursor is on any other field this button will be disabled. The button will also be disabled whenever there is nothing in the clipboard.

Factors button:

This button allows you change the conversion factors for any combination of units shown in the dialog. If you do change any conversion factors, when you try to exit the dialog, Convert It! will remind you that you made a change and ask if you wish to save the changes.

When you have finished you can press the Exit button to return to the main window. Pressing the Help button will get you this help topic.

For background information see [Energy Measurements](#)

Also see [Factors Dialog](#)

Pressure Command



This dialog box has several controls. New features are highlighted in **red**.

Initial Pressure:

This text box shows the current pressure that is converted in the Equivalent Pressure box. By entering a new value here you can convert any pressure to its equivalent in another unit.

Initial Pressure is in:

This group of option buttons allows you to indicate what unit the value in the Initial Pressure text box is in. This allows the tool to properly convert to the other units.

Equivalent Pressure:

This box contains an entry for each pressure unit. The scale indicated by the Initial Pressure is in: option button is the one that is controlled by the Initial Pressure text box and the scroll bar.

Pressure Scroll Bar:

Using this scroll bar can change the pressure indicated by the Initial Pressure is in: option buttons. Pressing one of the scroll arrows will change the pressure by one unit. Clicking on the gray area to the right or left of the scroll box (or pressing page up or page down) will change the pressure by 10 units.

Copy button:

This button allows you to copy the currently marked value to the clipboard. From there it can be pasted into many different applications. You can also perform this same function by pressing Ctrl-Ins when the cursor is on one of the fields.

Paste button:

This button allows you to paste the contents of the clipboard into the Initial value field. No data validation is performed. The Initial value field is the only field which can be pasted into. When the cursor is on any other field this button will be disabled. The button will also be disabled whenever there is nothing in the clipboard.

Factors button:

This button allows you change the conversion factors for any combination of units shown in the dialog. If you do change any conversion factors, when you try to exit the dialog, Convert It! will remind you that you made a change and ask if you wish to save the changes.

When you have finished you can press the Exit button to return to the main window. Pressing the Help button will get you this help topic.

For background information see [Pressure Measurements](#)

Also see [Factors Dialog](#)

Time Command



This dialog box has several controls. New features are highlighted in **red**.

Initial Time:

This text box shows the current time that is converted in the Equivalent Time box. By entering a new value here you can convert any time to its equivalent in another unit.

Initial Time is in:

This group of option buttons allows you to indicate what unit the value in the Initial Time text box is in. This allows the tool to properly convert to the other units.

Equivalent Time:

This box contains an entry for each time unit. The scale indicated by the Initial Time is in: option button is the one that is controlled by the Initial Time text box and the scroll bar.

Time Scroll Bar:

Using this scroll bar can change the time indicated by the Initial Time is in: option buttons. Pressing one of the scroll arrows will change the time by one unit. Clicking on the gray area to the right or left of the scroll box (or pressing page up or page down) will change the time by 10 units.

Copy button:

This button allows you to copy the currently marked value to the clipboard. From there it can be pasted into many different applications. You can also perform this same function by pressing Ctrl-Ins when the cursor is on one of the fields.

Paste button:

This button allows you to paste the contents of the clipboard into the Initial value field. No data validation is performed. The Initial value field is the only field which can be pasted into. When the cursor is on any other field this button will be disabled. The button will also be disabled whenever there is nothing in the clipboard.

Factors button:

This button allows you change the conversion factors for any combination of units shown in the dialog. If you do change any conversion factors, when you try to exit the dialog, Convert It! will remind you that you made a change and ask if you wish to save the changes.

When you have finished you can press the Exit button to return to the main window. Pressing the Help button will get you this help topic.

For background information see [Time Measurements](#)

Also see [Factors Dialog](#)

Force Command



This dialog box has several controls. New features are highlighted in **red**.

Initial Force:

This text box shows the current time that is converted in the Equivalent Force box. By entering a new value here you can convert any time to its equivalent in another unit.

Initial Force is in:

This group of option buttons allows you to indicate what unit the value in the Initial Time text box is in. This allows the tool to properly convert to the other units.

Equivalent Force:

This box contains an entry for each force unit. The scale indicated by the Initial Force is in: option button is the one that is controlled by the Initial Force text box and the scroll bar.

Force Scroll Bar:

Using this scroll bar can change the force indicated by the Initial Force is in: option buttons. Pressing one of the scroll arrows will change the force by one unit. Clicking on the gray area to the right or left of the scroll box (or pressing page up or page down) will change the force by 10 units.

Copy button:

This button allows you to copy the currently marked value to the clipboard. From there it can be pasted into many different applications. You can also perform this same function by pressing Ctrl-Ins when the cursor is on one of the fields.

Paste button:

This button allows you to paste the contents of the clipboard into the Initial value field. No data validation is performed. The Initial value field is the only field which can be pasted into. When the cursor is on any other field this button will be disabled. The button will also be disabled whenever there is nothing in the clipboard.

Factors button:

This button allows you change the conversion factors for any combination of units shown in the dialog. If you do change any conversion factors, when you try to exit the dialog, Convert It! will remind you that you made a change and ask if you wish to save the changes.

When you have finished you can press the Exit button to return to the main window. Pressing the Help button will get you this help topic.

For background information see [Force Measurements](#)

Also see [Factors Dialog](#)

Density Command



This dialog box has several controls. New features are highlighted in **red**.

Initial Density:

This text box shows the current time that is converted in the Equivalent Density box. By entering a new value here you can convert any time to its equivalent in another unit.

Initial Density is in:

This group of option buttons allows you to indicate what unit the value in the Initial Density text box is in. This allows the tool to properly convert to the other units.

Equivalent Density:

This box contains an entry for each density unit. The scale indicated by the Initial Density is in: option button is the one that is controlled by the Initial Density text box and the scroll bar.

Density Scroll Bar:

Using this scroll bar can change the density indicated by the Initial Density is in: option buttons. Pressing one of the scroll arrows will change the density by one unit. Clicking on the gray area to the right or left of the scroll box (or pressing page up or page down) will change the density by 10 units.

Copy button:

This button allows you to copy the currently marked value to the clipboard. From there it can be pasted into many different applications. You can also perform this same function by pressing Ctrl-Ins when the cursor is on one of the fields.

Paste button:

This button allows you to paste the contents of the clipboard into the Initial value field. No data validation is performed. The Initial value field is the only field which can be pasted into. When the cursor is on any other field this button will be disabled. The button will also be disabled whenever there is nothing in the clipboard.

Factors button:

This button allows you change the conversion factors for any combination of units shown in the dialog. If you do change any conversion factors, when you try to exit the dialog, Convert It! will remind you that you made a change and ask if you wish to save the changes.

When you have finished you can press the Exit button to return to the main window. Pressing the Help button will get you this help topic.

For background information see [Density Measurements](#)

Also see [Factors Dialog](#)

Velocity Command



This dialog box has several controls. New features are highlighted in **red**.

Initial Velocity:

This text box shows the current velocity that is converted in the Equivalent Velocity box. By entering a new value here you can convert any velocity to its equivalent in another unit.

Initial Velocity is in:

This group of option buttons allows you to indicate what unit the velocity in the Initial Velocity text box is in. This allows the tool to properly convert to the other units.

Equivalent Velocity:

This box contains an entry for each time unit. The scale indicated by the Initial Velocity is in: option button is the one that is controlled by the Initial Velocity text box and the scroll bar.

Velocity Scroll Bar:

Using this scroll bar can change the velocity indicated by the Initial Velocity is in: option buttons. Pressing one of the scroll arrows will change the velocity by one unit. Clicking on the gray area to the right or left of the scroll box (or pressing page up or page down) will change the time by 10 units.

Copy button:

This button allows you to copy the currently marked value to the clipboard. From there it can be pasted into many different applications. You can also perform this same function by pressing Ctrl-Ins when the cursor is on one of the fields.

Paste button:

This button allows you to paste the contents of the clipboard into the Initial value field. No data validation is performed. The Initial value field is the only field which can be pasted into. When the cursor is on any other field this button will be disabled. The button will also be disabled whenever there is nothing in the clipboard.

Factors button:

This button allows you change the conversion factors for any combination of units shown in the dialog. If you do change any conversion factors, when you try to exit the dialog, Convert It! will remind you that you made a change and ask if you wish to save the changes.

When you have finished you can press the Exit button to return to the main window. Pressing the Help button will get you this help topic.

For background information see [Velocity Measurements](#)

Also see [Factors Dialog](#)

Money Command



This dialog box has several controls. New features are highlighted in **red**.

Initial Money:

This text box shows the current money that is converted in the Equivalent Money box. By entering a new value here you can convert any monetary value to its equivalent in another unit.

Initial Money is in:

This group of option buttons allows you to indicate what unit the value in the Initial Money text box is in. This allows the tool to properly convert to the other units.

Equivalent Money:

This box contains an entry for each money unit. The scale indicated by the Initial Money is in: option button is the one that is controlled by the Initial Money text box and the scroll bar.

Money Scroll Bar:

Using this scroll bar can change the money indicated by the Initial Money is in: option buttons. Pressing one of the scroll arrows will change the time by one unit. Clicking on the gray area to the right or left of the scroll box (or pressing page up or page down) will change the money by 10 units.

Copy button:

This button allows you to copy the currently marked value to the clipboard. From there it can be pasted into many different applications. You can also perform this same function by pressing Ctrl-Ins when the cursor is on one of the fields.

Paste button:

This button allows you to paste the contents of the clipboard into the Initial value field. No data validation is performed. The Initial value field is the only field which can be pasted into. When the cursor is on any other field this button will be disabled. The button will also be disabled whenever there is nothing in the clipboard.

Factors button:

This button allows you change the conversion factors for any combination of units shown in the dialog. If you do change any conversion factors, when you try to exit the dialog, Convert It! will remind you that you made a change and ask if you wish to save the changes.

When you have finished you can press the Exit button to return to the main window. Pressing the Help button will get you this help topic.

For background information see [Money Measurements](#)

Also see [Factors Dialog](#)

Custom Command



This dialog box has several controls. New features are highlighted in **red**.

Initial Value:

This text box shows the current value that is converted in the Equivalent Value box. By entering a new value here you can convert any value to its equivalent in another unit.

Initial Value is in:

This group of option buttons allows you to indicate what unit the value in the Initial Value text box is in. This allows the tool to properly convert to the other units.

Equivalent Values:

This box contains an entry for each unit. The scale indicated by the Initial Value is in: option button is the one that is controlled by the Initial Value text box and the scroll bar.

Value Scroll Bar:

Using this scroll bar can change the value indicated by the Initial Value is in: option buttons. Pressing one of the scroll arrows will change the values by one unit. Clicking on the gray area to the right or left of the scroll box (or pressing page up or page down) will change the values by 10 units.

Copy button:

This button allows you to copy the currently marked value to the clipboard. From there it can be pasted into many different applications. You can also perform this same function by pressing Ctrl-Ins when the cursor is on one of the fields.

Paste button:

This button allows you to paste the contents of the clipboard into the Initial value field. No data validation is performed. The Initial value field is the only field which can be pasted into. When the cursor is on any other field this button will be disabled. The button will also be disabled whenever there is nothing in the clipboard.

Factors button:

This button allows you change the conversion factors for any combination of units shown in the dialog. If you do change any conversion factors, when you try to exit the dialog, Convert It! will remind you that you made a change and ask if you wish to save the changes.

When you have finished you can press the Exit button to return to the main window. Pressing the Help button will get you this help topic.

For conversion factors to use here see [General Conversion Factors](#)

Also see [Factors Dialog](#)
[Units Dialog](#)

File Menu Commands

The following are the commands available on the File menu.

Exit

This command will exit the Convert It! application. You may also press F3 to activate this command.

About

This command will display a dialog box showing the name of the application, its icon, its author, and how to register the program.

Exit Command



If this button is clicked on the main Convert It! window, the Convert It! window will be closed and Convert It! will be removed from memory.

If this button is clicked on one of the Conversion Tools, the conversion tool dialog will be closed and you will return to the main Convert It! window.

Help Command



If this button is clicked on the main Convert It! window, Convert It! will display a help topic about the available conversion tools.

If this button is clicked on one of the Conversion Tools, the conversion tool will display a help topic about the specific conversion tool.

Units Menu Commands

The following are the commands available on the Units menu.

Distance
Mass
Volume
Area
Angle
Power
Energy
Pressure
Time
Force
Density
Velocity
Money
Custom

These commands will display a Units dialog box. This dialog will allow you to add, change, or delete the conversion unit names used by the corresponding Conversion Tool. These changes will be saved in the Convert It! INI file. For more information see [Changing Conversion Units](#) in the Procedures section.

Convert It! and Windows Keys

Choose from the following list to get help with the keys used in Convert It! and Windows:

Convert It!

[Convert It! Keys](#)

Windows

[Dialog Box Keys](#)

[Editing Keys](#)

[Help Keys](#)

[Menu Keys](#)

[System Keys](#)

[Text Selection Keys](#)

[Window Keys](#)

Convert It! Keys

Key(s)	Function
Tab	Moves from one control to the next
<u>direction keys</u>	Moves between options in a group box
Alt+F4	Exits the current window
Enter	Performs the action of the current control
Spacebar	Presses the current <u>command button</u>
Alt+T	Activates the Temperature Convert Tool
Alt+D	Activates the Distance Convert Tool
Alt+M	Activates the Mass Convert Tool
Alt+V	Activates the Volume Convert Tool
Alt+A	Activates the Area Convert Tool
Alt+N	Activates the Angle Convert Tool
Alt+P	Activates the Power Convert Tool
Alt+E	Activates the Energy Convert Tool
Alt+R	Activates the Pressure Convert Tool
Alt+I	Activates the Time Convert Tool
Alt+F	Activates the Force Convert Tool
Alt+S	Activates the Density Convert Tool
Alt+L	Activates the Velocity Convert Tool
Alt+O	Activates the Money Convert Tool
Alt+C	Activates the Custom Convert Tool
D	Activates the Unit change dialog for Distance
M	Activates the Unit change dialog for Mass
V	Activates the Unit change dialog for Volume
A	Activates the Unit change dialog for Area
N	Activates the Unit change dialog for Angle
P	Activates the Unit change dialog for Power
E	Activates the Unit change dialog for Energy
R	Activates the Unit change dialog for Pressure
I	Activates the Unit change dialog for Time
F	Activates the Unit change dialog for Force
S	Activates the Unit change dialog for Density
L	Activates the Unit change dialog for Velocity
O	Activates the Unit change dialog for Money
C	Activates the Unit change dialog for Custom
F3	Exits Convert It! or the current tool
F1	Starts the Help System
Shift+F1	Activates Help Mode

Dialog Box Keys

Use the following keys within dialog boxes.

Key(s)	Function
Tab	Moves from one control to the next
Shift+Tab	Moves from one control to the next in reverse order
Alt+letter	Moves to the option whose underlined letter matches the one you type
direction key	Moves the <u>selection cursor</u> from option to option in a group of options. Or moves the cursor left, right, up, or down within a list or text box.
Home	Moves to the first item or character in a list or text box
End	Moves the last item or character in a list or text box
PgUp or PgDn	Scrolls up or down in a list box, one window at a time
Alt+Down Arrow	Opens a drop-down list box
Alt+Up or Down Arrow	Selects an item in a drop-down list box
Spacebar	Selects or cancels a selection in a list box or selects Or clears a check box
Ctrl+Slash(/)	Selects all the items in a list box
Ctrl+Backslash(\)	Cancels all selections except the current selection
Shift+direction key	Extends the selection in a text box
Shift+Home	Extends the selection to the first character in a text box
Shift+End	Extends the selection to last character in a text box
Enter	Executes a <u>command button</u> Or chooses the selected item in a list box and executes the command
Esc or Alt+F4	Closes a dialog box without completing the command(same as the Cancel button)

Also see Editing Keys

Editing Keys

Use the following keys to edit text.

Key(s)	Function
Backspace	Deletes the character to the left of the <u>insertion point</u> . Or deletes selected text.
Del	Deletes the character to the right of the insertion point. Or deletes selected text.
Shift+Del	Deletes the selected text and places it on Clipboard.
Shift+Ins	Inserts text from Clipboard to the active window.
Ctrl+Ins	Makes a copy of the selected text and places it on Clipboard.
Alt+Bksp	Undoes the previous editing operation.

Also see [Text Selection Keys](#)

Help Keys

Use the following keys to get Help.

<u>Key(s)</u>	Function
F1	Gets Help and displays the Help Index for the application. If the Help window is already open, pressing F1 displays the index to Using Help In some Windows applications, pressing F1 displays a Help topic on the selected command, dialog box option, or system message.
Shift+F1	Changes the pointer to a question mark with an arrow so you can get Help on a specific command, screen region, or key. You can then choose the command, click the screen region, or press the key or key combination you want to know more about. This feature is only available on the main window.

Menu Keys

Use the following keys to select menus and choose commands.

Key(s)

Alt or F10

Letter key

Left or Right Arrow

Up or Down Arrow

Enter

Esc

Function

Selects the first menu on the menu bar

Chooses the menu or menu item whose underlined letter matches the one you type.

Moves among menus.

Move among menu items.

Chooses the selected menu item.

Cancels the selected menu.

System Keys

Use the following keys can be used from any window, regardless of the application you are using.

<u>Key(s)</u>	Function
Ctrl+Esc	Switches to <u>Task List</u>
Alt+Esc	Switches to the next application window or minimized <u>icon</u> , including full-screen programs.
Alt+Tab	Switches to the next application window, restoring applications that are running as icons.
PrtSc	Copies an image of the screen contents onto Clipboard
Alt+PrtSc	Copies an image of the active window onto Clipboard
Alt+F4	Closes the active application window.
Ctrl+F4	Closes the active document window.
F1	Gets Help and displays the Help Index for the application. (See <u>Help Keys.</u>)

Text Selection Keys

The following keys can be used in the Conversion tool dialogs. However, the only fields that will allow these keys to be used are the Initial Value and Equivalent value fields.

Key(s)	Function
Shift+Left or Right Arrow	Selects text one character at a time to the left or right. Or, if the character is already selected, cancels the selection.
Shift+Home	Selects text to the beginning of the line.
Shift+End	Selects text to the end of the line.

Also see [Editing Keys](#)

Window Keys

Key(s)	Function
Alt+Spacebar	Opens the <u>C</u> ontrol menu for an application.
Alt+Hyphen	Opens the Control menu for a document window.
Alt+F4	Closes a <u>w</u> indow.
Alt+Esc	Switches to the next application window or minimized icon, including full-screen programs.
Alt+Tab	Switches to the next application window, restoring applications that are running as icons.
Alt+Enter	Switches a non-Windows application between running in a window and running full screen.
direction key	Moves a window when you have chosen Move from the Control menu. Or, changes the size of a window when you have chosen Size from the Control menu.

Convert It! Procedures

This index lists all Help topics available for Convert It! procedures. Index items are arranged alphabetically. Use the scroll bar to see entries not currently visible in the Help window.

[Changing Conversion Factors](#)
[Changing Conversion Units](#)
[Command Buttons](#)
[Control Menu Commands](#)
[Entering an Initial Value](#)
[Exiting Convert It!](#)
[Moving Within a Conversion Tool](#)
[Opening the Control Menu](#)
[Option Buttons](#)
[Quitting a Conversion Tool](#)
[Starting a Conversion Tool](#)
[Using Scroll Bars](#)

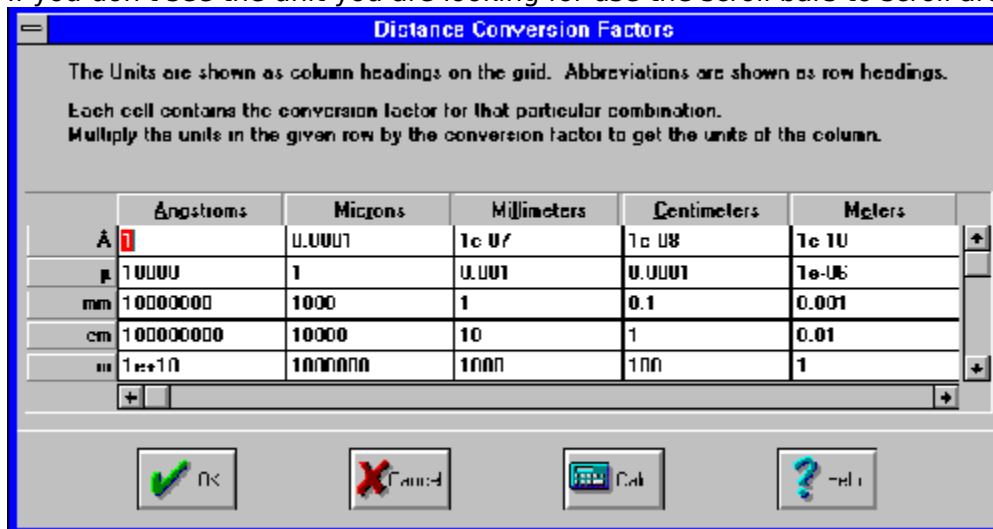
Changing Conversion Factors

All Conversion Tools, except the Temperature conversion tool, allow you to change the conversion factors that are used in its calculations. You can get to the Conversion Factor dialog either from the Conversion Tool dialog or from the Conversion Unit dialog.

The dialog shows you a grid in which is displayed the conversion factors currently in use. You can change a conversion factor simply by typing over an existing one. The way you read the grid is as follows. If you have a value of unit x and you want to convert it to unit y, you look for row x then scan across to column y. Where the row and column meet is the value you need to multiply value x by to get value y.

For example, if you are converting inches to centimeters, find the row for inches move across for the column for centimeters. Where they meet will be your conversion factor. Multiply inches by this number and you will have centimeters.

If you don't see the unit you are looking for use the scroll bars to scroll around the grid.



You do not need to enter a value into all the cells shown. It is sufficient to only have values entered for a complete row, a complete column or a complete diagonal from upper left to lower right. You can then press the Calculate button. Convert It! will inform you if it cannot calculate a value for a cell with the information you have given.

One point to keep in mind when you allow Convert It! to calculate a conversion factor for you, is that of accuracy. If a conversion factor you enter is accurate to 5 significant digits and another is accurate to 7 significant digits then any new conversion factor Convert It! creates using these two factors will only be significant to 5 digits even though Convert It! will create a factor that may have up to 10 digits. Therefore the fewer conversion factors that Convert It! has to create, the more accurate those conversions will be.

If you have made some changes but do not wish to keep them press the Cancel button. Otherwise press the OK button. However, your changes will not be written to the INI file until you exit the dialog you were in when you started the Factors dialog.

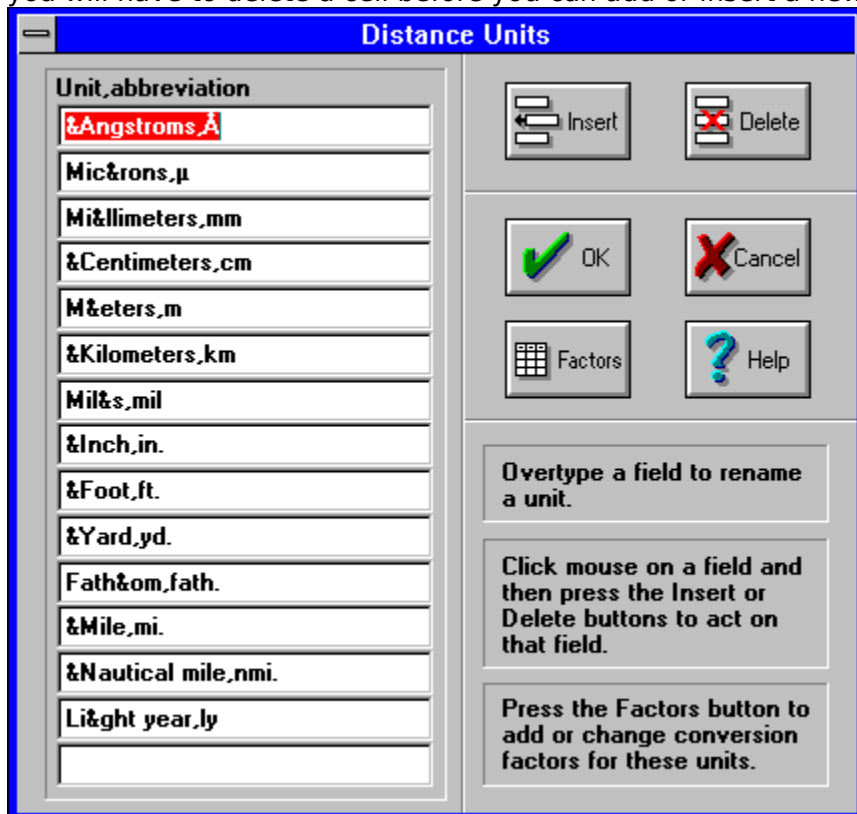
See Also [Changing Conversion Units](#)

Changing Conversion Units

Use the Unit menu to choose the category of conversion in which you want to change units.

This will display a dialog box that lists all the current units for the group you selected. To change the spelling of a unit or give it a new name/abbreviation just type over the existing name.

If you want to add a unit you can move down to an empty cell and enter a new unit there. If you want it to appear in a certain order you can place the cursor on a field and press the Insert button. This will insert a blank cell above the current cell. If all fifteen cells are filled you will have to delete a cell before you can add or insert a new one.



To delete a cell just click on a cell then press the Delete button. This will delete the current cell. **Note:** You must have at least two units in each category.

Once you have selected your units, you can press the Factors button to get the Conversion Factors dialog where you can define the conversion factors for the new units.

If you make any changes, either in this dialog or in the Conversion Factors dialog, when you press OK you will be asked to verify that you want your changes saved to the INI file. If you press YES then the next time you use that conversion it will use your new units and conversion factors.

If you have made changes when you press the Cancel button, Convert It! will remind you that you have made some changes. It will ask if you are sure that you want to discard them. If you respond YES, it will not save your changes.

See also [Changing Conversion Factors](#)

Command Buttons

Command buttons initiate an immediate action. Like menu commands, command buttons use the following conventions.

Convention What it means

Dark border The currently selected default button.

Dimmed button The button is unavailable at this time.

Ellipsis(...) Opens another dialog box so you can provide more information.

You can close a dialog box without completing any commands by choosing Cancel (or Esc).

To choose a command button:



* Click the command button.



1. Press Tab to select the command button you want. A selection cursor around the button text marks the selected button.

2. Press Spacebar (or Enter) to choose the button. Or hold down Alt and type the underlined letter in the button name (if the button has an underlined letter) to choose the button in one step.

Control Menu Commands

The following table defines the Control menu commands.

Command	Action
Restore	Restores the <u>window</u> to its former size after it has been enlarged or shrunk to an <u>icon</u> .
Move	Lets you use the keyboard to move the window to another position on the desktop.
Minimize	Shrinks the window to an icon.
Close	Closes the window.
Switch To	Starts <u>Task List</u> , which lets you switch among running applications and rearrange their windows and icons on your desktop.

Entering an Initial Value

The Initial Value field in each Conversion Tool is a text box. A text box is a rectangle into which you type information.

When you move to an empty text box, an insertion point appears at the left side of the box. The text you type starts at the insertion point.

If the box already contains text when you move to it, all the text in the box is automatically selected and any text you type replaces it. Or you can erase the existing text by pressing Del or Backspace.

To select text in a text box:



* Drag the pointer across the text you want to select. Or double-click to select one word at a time.



1. Use the direction keys to move to the first character you want to select.
2. Hold down Shift and press a direction key to extend the selection. Press Shift+Home to extend the selection to the first character in the box. Press Shift+End to extend the selection to the last character in the box.

Also see [Text Selection Keys](#)

Exiting Convert It!

You may exit Convert It! in one of six ways:

1. Choose Close from the Control menu.
2. Press the Alt+F4 key combination.
3. Double click on the Control-menu box.
4. Choose Exit from the File Menu.
5. Press F3.
6. Press the Exit button.

Moving Within a Conversion Tool

Often you need to move around within a Conversion Tool to make several selections. Since a Conversion Tool is a dialog box, the methods are the same. The current option is marked by a selection cursor around the name of the option.

To move within a Conversion Tool (dialog box):



* Click the option or group you want to move to.



1. Press Tab to move forward (left to right and top to bottom) or Shift+Tab to move in the opposite direction. Or hold down Alt and type the underlined letter in the option or group name.
2. Within a group of options, use the direction keys to move from one option to another.

Opening the Control Menu

Application windows, document windows, application icons, group icons, and some dialog boxes have Control menus (also called System menus).

To open the Control menu for an application window or application icon:



* Click the Control-menu box in the upper left corner of the window. Or click the icon. Be careful not to double-click, or you will close the window or open the icon.



1. Press Alt+Esc until the application window or icon is selected.
2. Press Alt then the Spacebar. Press Alt to close the menu without choosing a menu item.

To open the Control menu for a dialog box:



* Click the Control-menu box in the dialog box.



Press Alt and then Spacebar. Press Alt to close the menu without choosing a menu item.

Option Buttons

Option buttons, also called radio buttons, provide lists of mutually exclusive items. You can select only one option from the list at a time. The selected option button contains a black dot. Unavailable options are dimmed.

To select an option button:



* Click the option button.



1. Press Tab to move into the option group.
2. Use the direction keys to select the option button. Or hold down Alt and press the underlined letter if the option name contains an underlined letter.

Quitting a Conversion Tool

You may exit a Conversion Tool in one of five ways:

1. Choose Close from the Control menu.
2. Press the Alt+F4 key combination.
3. Double click on the Control-menu box.
4. Press Esc.
5. Press the Exit button.

Starting a Conversion Tool

You may start a Conversion Tool in one the following ways:



* Click the proper tool button. Or use the menu to choose the Conversion menu and select a tool.



Press Tab to move to the tool button. Then press Spacebar. Or press Alt and use the direction keys to select the Conversion menu then select the tool. Or use one of the keys listed in Convert It! Keys

Using Scroll Bars

The Conversion Tools have scroll bars you can use to change the value to be converted.



Mouse techniques:

To scroll

Do this

Up or down 1 unit

Click one of the scroll arrows.

Up or down 10 units

Click the scroll bar to the left or right of the scroll box.

Continuously

Point to one of the scroll arrows and hold down the mouse button until the value you want is displayed.

To any position

Drag the scroll box left or right on the scroll bar to a place you choose.



Keyboard techniques:

To scroll

Do this

Up or down 1 unit

Press the direction key that points in the direction you want to scroll.

Up or down 10 units

Press Ctrl+PgUp or Ctrl+PgDn.

To the bottom of the scale

End

To the top of the scale

Home

Weights and Measures

Weights and Measures are the standards used to find the size of things. People in the United States and a few other countries use standards that belong to the customary, or English, system of measurement. This system was developed in England from older measurements standards, beginning about the 1200's. People in nearly all other countries -- including England --, and all scientists, now use a system of measurement called the metric system. The metric system was created in France in the 1790's. Its official name is *Système Internationale d'Unités* (International System of Units).

In the related topics and unit conversion tables numbers that would be given in scientific notation (i.e. 1.345×10^5) are given in a notation used by many programming languages. The notation would make the example given above look like 1.345e5. In this notation the 'e' with its following digits indicate the power of 10 to multiply by the rest of the number.

Related Topics

[Length and Distance](#)

[Surface or Area](#)

[Volume and Capacity](#)

[Weight and Mass](#)

[Temperature](#)

[Angular Measurements](#)

[Power Measurements](#)

[Energy Measurements](#)

[Pressure Measurements](#)

[Time Measurements](#)

[Force Measurements](#)

[Density Measurements](#)

[Velocity Measurements](#)

[Money Conversions](#)

[Other Measures](#)

[Tables](#)

Length and Distance

Lengths and distances are measured from one point to another, usually along a straight line. Length usually refers to the measurement of an object. Distance usually refers to the measurement of the space between two places. Below is a table showing the customary and metric units for length and distance.

Customary	Metric	Metric	Customary
1 inch	2.54 cm	1 nanometer	0.00000003937 in.
1 foot	30.48 cm	1 micron	0.00003937 in.
1 yard	0.9144 m	1 millimeter	0.03937 in.
1 rod	5.0292 m	1 centimeter	0.3937 in.
1 furlong	201.168 m	1 decimeter	3.937 in.
1 mile	1.6093 km	1 meter	39.37 in.
		1 dekameter	393.7 in.
		1 hectometer	328.0833 ft.
		1 kilometer	0.62137 mi.

Ancient peoples measured length by comparing the length of one thing with the length of the thing they wanted to measure, such as comparing a stick with an animal. Ancient people also based measurements on parts of the body. The Romans use the *uncia* for the width of a thumb. The English word inch comes from that word. Twelve uncia equaled a foot, which was roughly the length of a person's foot. Three feet equaled a yard, which was about the distance from a person's nose to the tip of the middle finger of an outstretched arm.

Measuring units based on body parts failed because not all people were the same size. Modern systems of measurement are based on units called measurement standards that are of a size agreed upon by the users of the system. Both the customary and the metric system use the same standard for length -- the meter. Scientists have defined the length of a meter as 1,650,763.73 wave lengths of light emitted from energized atoms of krypton-86. It is about 39 1/3 inches.

Other Length and Distance units:

1 meter	= 1.0e10 Angstroms [Å]
	= 3.937007874e7 microinch [μin]
	= 3.937007874e4 mil
	= 4.970969538 link
	= 0.05468066491 fathom
	= 4.970969538e-2 chain [ch]
	= 3.280839895e-2 Engineer's chain
	= 5.399568034e-4 nautical mile [n mi]
	= 1.057020998e-16 light year [ly]

Related Topics

[Surface or Area](#)

[Volume and Capacity](#)

[Weight and Mass](#)

[Temperature](#)

[Angular Measurements](#)

[Power Measurements](#)

[Energy Measurements](#)

[Pressure Measurements](#)

Time Measurements
Force Measurements
Density Measurements
Velocity Measurements
Money Conversions
Other Measures
Tables

Surface or Area

An area of land or the surface of an object is measured in square units. These units result from multiplying the length of the area or object by its width. The square units of both the customary and metric systems are based on units of length and distance. Many times a small 2, placed the right and above the abbreviation of a metric unit (a superscript), indicates a square unit.

Customary	Metric	Metric	Customary
1 sq. inch	6.4516 cm ²	1 sq. millimeter	0.00155 sq. in.
1 sq. foot	0.0929 m ²	1 sq. centimeter	0.155 sq. in.
1 sq. yard	0.8361 m ²	1 sq. decimeter	15.5 sq. in.
1 sq. rod	25.293 m ²	1 sq. meter	1550 sq. in.
1 acre	0.4047 ha	1 sq. dekameter	119.6 sq. yd.
1 sq. mile	2.590 km ²	1 sq. hectometer	2.4711 acres
		1 sq. kilometer	0.3861 sq. mi.

Other Area units:

1 m² = 1.0e28 Barn
= .01 Are [a]
= .0001 Hectare [ha]
= 1.5500031e9 mil²
= 24.71053815 square link
= 2.471053815e-3 square chain [ch²]
= 3.953686103e-2 square rod [rod²]
= 1.072505996e-8 Township

Related Topics

[Length and Distance](#)

[Volume and Capacity](#)

[Weight and Mass](#)

[Temperature](#)

[Angular Measurements](#)

[Power Measurements](#)

[Energy Measurements](#)

[Pressure Measurements](#)

[Time Measurements](#)

[Force Measurements](#)

[Density Measurements](#)

[Velocity Measurements](#)

[Money Conversions](#)

[Other Measures](#)

[Tables](#)

Volume and Capacity

Volume refers to the amount of space occupied by an object. Capacity is the amount of a substance that a container can hold. Volume and capacity are both measured in cubic units. Cubic units combine length, width, and depth. But the names of many common cubic units, such as liter and quart, do not include the word cubic. A small 3, placed to the right and above the abbreviation of a metric unit (a superscript), indicates a cubed unit.

Customary	Metric	Metric	Customary
1 cubic inch	16.387 cm ³	1 milliliter	0.0610 cu. in.
1 cubic foot	0.0283 m ³	1 centiliter	0.6103 cu. in.
1 cubic yard	0.7646 m ³	1 liter	61.025 cu. in.
1 pint	473.2 ml	1 kiloliter	264.179 gal.
1 US bushel	35.238 l		
1 US peck	8.809 l		

Other Volume and Capacity units:

- 1 m³ = 1.0e9 cubic millimeter [mm³]
- = 1.0e6 cubic centimeter [cm³ or cc] or milliliter [ml]
- = 1.0e3 cubic decimeter [dm³] or liter [l]
- = 270512.1816 US fluid drams [US fl dr]
- = 33814.0227 US fluid ounces [US fl oz]
- = 202884.1362 US teaspoon [US tsp.]
- = 8453.505675 US gill [US gi]
- = 4226.752838 US cup
- = 2113.376419 US pint [US pt]
- = 1056.688209 US quart [US qt]
- = 264.1720523 US gallon [US gal]
- = 8.38641436 US barrel
- = 6.28981077 US barrel petroleum
- = 0.275898338 cord
- = 35195.07973 UK fluid ounce [UK fl oz]
- = 7039.015945 UK gill
- = 1759.753986 UK pint [UK pt]
- = 879.8769932 UK quart [UK qt]
- = 219.9692483 UK gallon [UK gal]
- = 0.3531466672 Register ton [RT]

Related Topics

[Length and Distance](#)

[Surface or Area](#)

[Weight and Mass](#)

[Temperature](#)

[Angular Measurements](#)

[Power Measurements](#)

[Energy Measurements](#)

[Pressure Measurements](#)

[Time Measurements](#)

[Force Measurements](#)

[Density Measurements](#)

[Velocity Measurements](#)

[Money Conversions](#)

[Other Measures](#)

Tables

Weight and Mass

The customary system measures the weight of various materials. The metric system measures mass (amount of material something contains). An object's mass does not change, but its weight decreases with altitude. These two measurement units are equal at sea level on the earth, and the comparisons in this table are based on that location.

Customary	Metric	Metric	Customary
1 grain	0.0648 g	1 milligram	0.0154 gr.
1 ounce	28.3495 g	1 centigram	0.1543 gr.
1 pound	0.45359 kg	1 gram	15.4324 gr.
1 ton	0.9072 t	1 kilogram	2.2046 lb.
1 Troy ounce	31.103g	1 metric ton	2,204.62 lb.

Other Weight and Mass units:

1 kg = 1.0e9 micrograms [μg]
= 5000 metric carat [Kt]
= 771.6179176 scruple
= 643.0149314 pennyweight [dwt]
= 257.2059725 dram apothecaries[dr ap]
= 2.679228881 troy pound [lb t]
= 564.3833912 dram [dr]
= 0.1574730444 stone
= 7.873652221e-2 quarter [qr]
= 6.852176585e-2 slug
= 2.204622622e-2 short hundredweight [sh cwt]
= 1.968413055e-2 long hundredweight [l cwt]
= 9.842065276e-4 long ton [ton or UK ton]

Related Topics

[Length and Distance](#)

[Surface or Area](#)

[Volume and Capacity](#)

[Temperature](#)

[Angular Measurements](#)

[Power Measurements](#)

[Energy Measurements](#)

[Pressure Measurements](#)

[Time Measurements](#)

[Force Measurements](#)

[Density Measurements](#)

[Velocity Measurements](#)

[Money Conversions](#)

[Other Measures](#)

[Tables](#)

Temperature

The customary system measures temperature in Fahrenheit degrees. The metric system measures temperatures in Celsius degrees. The Kelvin scale is based on absolute zero being 0 degrees Kelvin. In theory nothing can get colder than absolute zero.

On the Fahrenheit scale water freezes at 32° and boils at 212° under normal atmospheric pressure. On the Celsius scale, water freezes at 0° and boils at 100°. Because there are 100° between freezing and boiling on the Celsius scale it is sometimes called the centigrade scale. Absolute zero, 0° Kelvin, is -273.15° Celsius, otherwise the two scales are graduated the same. In other words 1° Kelvin measures the same temperature difference as 1° Celsius. Only their respective 0 points are different.

There is no single measurement standard for temperature. Various temperatures are used to standardize thermometers. One of these is 0.01° C, which is the triple point of water (the temperature at which water can exist as a liquid, a gas, and a solid at the same time).

Related Topics

[Length and Distance](#)

[Surface or Area](#)

[Volume and Capacity](#)

[Weight and Mass](#)

[Angular Measurements](#)

[Power Measurements](#)

[Energy Measurements](#)

[Pressure Measurements](#)

[Time Measurements](#)

[Force Measurements](#)

[Density Measurements](#)

[Velocity Measurements](#)

[Money Conversions](#)

[Other Measures](#)

[Tables](#)

Angular Measurements

There are several units used to measure angles.

The degree is $1/360$ of the way around a circle. Degrees are sometimes further divided into minutes and seconds. Usually called minutes of arc, a minute is $1/60$ of a degree. Similarly a second of arc is $1/60$ of a minute of arc. Therefore a circle contains 360 degrees or 21600 minutes of arc or 1296000 seconds of arc.

Radians are also used to measure angles of arc. A complete circle contains 2π radians. One radian is the angle at the center of a circle that cuts off an arc on the circumference equal in length to the radius. One radian is equal to 57.2957795 degrees.

Mils are also sometimes used to measure angles. A mil is $1/6400$ of a circle. Mils are mainly used in aiming artillery. One complete circle is 6400 mils. One mil is equal to 0.05625 degrees

A grade, or gon, is one-hundredth of a right angle. A circle contains 400 grades. The grade was developed in 1792. It is a metric measurement of angle. One grade is equal to 0.9 degrees. A centigrade, sometimes called a centesimal minute (cg) is $1/100$ th of a grade. A hundredth of a centigrade, sometimes called a centesimal second (cc), is $1/100,000$ th of a grade.

Quadrants are some times used to measure angles. A circle contains four quadrants. One quadrant is equal to 90 degrees.

A revolution is also used to measure angular distance. One revolution is 360 degrees, 2π radians (approx. 6.28318512), 6400 mils, 400 grades, and four quadrants.

Related Topics

[Length and Distance](#)

[Surface or Area](#)

[Volume and Capacity](#)

[Weight and Mass](#)

[Temperature](#)

[Power Measurements](#)

[Energy Measurements](#)

[Pressure Measurements](#)

[Time Measurements](#)

[Force Measurements](#)

[Density Measurements](#)

[Velocity Measurements](#)

[Money Conversions](#)

[Other Measures](#)

[Tables](#)

Power Measurements

Power is a measure of the amount of energy spent over certain period of time. The units used in this program are the Watt, kilowatt, and the metric horsepower for the metric system. The customary power unit used is the horsepower.

The watt is the power provided when one joule is used for one second.

The British horsepower is the power needed to raise 550 pounds one foot in one second.

The metric horsepower is the power needed to raise 75 kilograms one meter in one second.

1 horsepower = 745.7W
1 hp (metric) = 735.3W
1 Watt = 0.001341 hp
1 kilowatt = 1000 W

Other Power units:

1 W = 1.0e7 dyne centimeter per second [dyn cm/s] or erg per second [erg/s]
= 1 joule per second [J/s]
= 1.0e-6 megawatt [MW]
= 0.1019716213 kilogram force meter per second [kg m/s]
= 0.2388458966 calorie per second [cal/s]
= 859.8452278 calorie per hour [cal/h]
= 2.388458966e-4 kilocalorie per second [kcal/s]
= 0.8598452278 kilocalorie per hour [kcal/h]
= 8.598452278e-4 megacalorie per hour [Mcal/h]
= 35.5292376 liter atmosphere per hour [l atm/h]
= 9.478171203e-4 British thermal units per second [Btu/s]
= 3.412141633 British thermal units per hour [Btu/h]
= 5.265650668e-4 centigrade heat units per second [CHU/s]
= 1.8956342406 centigrade heat units per hour [CHU/h]
= 0.7375621493 foot pound force per second [ft lbf/s]
= 2655.223737 foot pound force per hour [ft lbf/h]
= 23.7303604 foot poundal per second [ft pdl/s]
= 85429.29745 foot poundal per hour [ft pdl/h]
= 2.843451361e-4 ton of refrigeration per hour [ton/h]

Related Topics

[Length and Distance](#)

[Surface or Area](#)

[Volume and Capacity](#)

[Weight and Mass](#)

[Temperature](#)

[Angular Measurements](#)

[Energy Measurements](#)

[Pressure Measurements](#)

[Time Measurements](#)

[Force Measurements](#)

[Density Measurements](#)

[Velocity Measurements](#)

[Money Conversions](#)

[Other Measures](#)

[Tables](#)

Energy Measurements

Energy is defined as the equivalent of or the capacity to do work. The units used in this program are the joule, erg, calorie, and the Calorie for the metric system. The customary energy unit used is the Btu.

The joule (J), or Newtonmeter (Nm), or Wattsecond (Ws), is the amount of energy needed to move a mass of one kilogram through one meter with an acceleration of one meter per second per second.

The erg is the amount of energy needed to move one gram through one centimeter with an acceleration of one centimeter per second per second.

The calorie (cal) is the amount of energy needed to raise the temperature of one gram of water by one degree Celsius from 14.5° Celsius to 15.5° Celsius. A kilocalorie is equal to 1000 cal.

The British thermal unit (Btu) is the energy needed to raise the temperature of one pound of water from 60° Fahrenheit to 61° Fahrenheit.

1 joule	= 1.0e7 erg
1 erg	= 2.3892e-7 cal
1 cal	= 4.1855 J
1 kilocalorie	= 1000 cal
1 Btu	= 1054.8 J

Other Energy units:

1 J	= 6.241460122e18 electron-volt [eV]
	= 9.869232667 cubic centimeter atmosphere [cm ³ atm]
	= 9.869232667e-3 liter atmosphere [l atm]
	= 1.0e-6 megajoule [MJ]
	= 2.777777778e-4 Watt hour [Wh]
	= 2.777777778e-7 kilowatt hour [kWh]
	= 0.1019716213 kilogram force meter [kgf m]
	= 3.776726715e-7 horsepower hour (metric) [HP h]
	= 3.72506136e-7 horsepower hour [hp h]
	= 5.265650668e-4 centigrade heat units [CHU]
	= 9.478171203e-9 therm
	= 8.850745791 inch pound force [in lbf]
	= 0.7375621493 foot pound force [ft lbf]
	= 23.7303604 foot poundal [ft pdl]
	= 3.485286624e-4 cubic foot atmosphere [ft ³ atm]
	= 5.12195937e-3 cubic foot pound force per square inch [ft ³ lbf/in ²]
	= 3.291031668e-9 ton of refrigeration [ton]

Related Topics

[Length and Distance](#)

[Surface or Area](#)

[Volume and Capacity](#)

[Weight and Mass](#)

[Temperature](#)

[Angular Measurements](#)

[Power Measurements](#)

[Pressure Measurements](#)

Time Measurements
Force Measurements
Density Measurements
Velocity Measurements
Money Conversions
Other Measures
Tables

Pressure Measurements

In physics, pressure is Force measured in terms of its distribution over an area of opposing force. This is expressed as force **F** divided by unit area **A** of the surface area to which the force is applied, or **F / A**. Pressure usually refers to a force exerted uniformly in all directions. Absolute pressure is pressure measured with respect to zero pressure. Gauge pressure is pressure measured with respect to air pressure (the weight of the atmosphere).

The units used in this program are inches of mercury, (in of Hg) centimeters of mercury (cm of Hg), pounds per square inch (psi), atmospheres (atm), kilopascals (kPa) (also known as pascals), pascals (Pa) (also known as newton per square meter), bars, millibars (mbars) (also known as hectopascals), and microbars (dynes per square centimeter).

1 atm	= 14.7 psi
	= 23.9292 in. of mercury.
	= 76 cm of mercury.
	= 101.325 kPa
	= 1013.25 mbars
1 Pa	= 1 Newton per sq. meter
1 mbar	= 1000 dynes per sq. cm

Other Pressure units:

1 Pa	= 1.0e-5 bar
	= 1.0e-6 megapascal [MPa]
	= 0.1019716213 kilogram force per square meter [kgf/m ²]
	= 1.019716213e-5 kilogram force per square centimeter [kgf/cm ²]
	= 1.019716213e-7 kilogram force per square millimeter [kgf/mm ²]
	= 7.500616827e-3 Torriceli [Torr]
	= 4.014630759e-3 inches of water [inH ₂ O]]
	= 0.6719689751 poundal per square foot [pdl/ft ²]
	= 2.088543423e-2 pound force per square foot [lbf/ft ²]
	= 2.320603803e-3 ounce force per square inch [ozf/ft ²]
	= 1.450377377e-4 pound force per square inch [psi]
	= 7.251886886e-8 short ton force per square inch [sh tonf/in ²]
	= 6.474899006e-8 long ton force per square inch [l tonf/in ²]

Related Topics

[Length and Distance](#)

[Surface or Area](#)

[Volume and Capacity](#)

[Weight and Mass](#)

[Temperature](#)

[Angular Measurements](#)

[Power Measurements](#)

[Energy Measurements](#)

[Time Measurements](#)

[Force Measurements](#)

[Density Measurements](#)

[Velocity Measurements](#)

[Money Conversions](#)

[Other Measures](#)

[Tables](#)

Time Measurements

From the earliest times the rotation of the Earth or the apparent location of the Sun in the sky has been used to establish a uniform time scale. In order to specify a date, days must be counted from some reference date. In addition, a clock is used to measure fractions of a day.

Time derived from the apparent position of the Sun in the sky is called apparent solar time. Because of the eccentricity of the Earth's rotation axis to the orbital plane, apparent solar time is not a uniform time scale. These effects can, however, be calculated and corrections made to obtain a more uniform time scale called mean solar time. **Universal Time (UT0)** is equivalent to mean solar time at the Greenwich Meridian, also known as Greenwich Mean Time or GMT. Another time scale, which is obtained by observations of the apparent motion of a distant star, is used in astronomy and called sidereal time.

The accuracy of time keeping today has improved many times since the time of the Greeks. The invention of the quartz crystal oscillator and of the **Atomic Clock** makes possible the measurement of time and frequency more accurately than any other physical quantity. This makes possible other time scales such as atomic time (**AT**), which is based on the microwave resonances of certain atoms in a magnetic field. This provides the most accurate and stable clocks known. Atomic time scales obtained by counting the cycles of an electromagnetic signal in resonance with cesium atoms have an accuracy of a few billionths of a second over short intervals of a minute or less.

Since about 1960 a number of laboratories around the world have cooperated in comparing their atomic time scales, leading to the formation of a weighted average of the various atomic time scales, which is now disseminated to the public as **Universal Coordinated Time (UTC)**. In order to keep **UTC** in agreement with the length of the day, *leap seconds* are occasionally added to or deleted from the atomic time scale.

The advancement of precision in time measurement has resulted in the adoption of new, more precise, definitions of the second.

Prior to 1956, one second was defined as the fraction 1/86,400 of the mean solar day.

From 1956 to 1967, it was the ephemerical second, defined as the fraction 1/31556925.9747 of the tropical year at 00h 00m 00s December 31,1899.

The second is currently defined as the duration of 9,192,631,770 periods of the radiation corresponding to the transition between the two hyperfine levels of the ground state of the cesium-133 atom.

1 millennium	=	1000 years
1 century	=	100 years
1 year	=	12 months
1 week	=	7 days
1 day	=	24 hours
1 hour	=	60 minutes
1 minute	=	60 seconds
1 second	=	1000 milliseconds
1 millisecond	=	1000 microseconds
1 microsecond	=	1000 nanoseconds
1 nanosecond	=	1000 picoseconds

Related Topics

Length and Distance
Surface or Area
Volume and Capacity
Weight and Mass
Temperature
Angular Measurements
Power Measurements
Energy Measurements
Pressure Measurements
Force Measurements
Density Measurements
Velocity Measurements
Money Conversions
Other Measures
Tables

Force Measurements

Physicists measure a force by the change in velocity that is produced on a known mass in a given time. For example, in metric units, 1 newton of force acting on 1 kilogram of mass can change its velocity by 1 meter per second. This change in velocity is the acceleration of that mass. In customary units, 1 poundal of force acting on 1 pound of mass can change its velocity by 1 foot per second.

In the table below the unit abbreviation is shown in square brackets.

1 newton [N] = 1,000,000 micronewtons [μ N]
= 100,000 dyne [dyn]
= 1000 millinewton [mN]
= 0.001 kilonewton [kN]
= 0.000001 meganewton [MN]
= 101.9716213 gram-force [gf]
= 0.1019716213 kilogram-force [kgf]
= 1.019716213e-4 megagram-force [Mgf]
= 7.233013851 poundal [pdl]
= 1573.662601 grain-force [grf]
= 3.596943089 ounce-force [ozf]
= 0.2248089431 pound-force [lbf]
= 0.0001124044715 Ton-force (short) [sh tnf]
= 0.0001003611353 Ton-force (long) [tonf]

Note that a kilonewton is also known as a Sthène [sn]. A gram-force is also known as a pond [p]. A megagram-force is also known as a ton-force (metric).

Related Topics

[Length and Distance](#)

[Surface or Area](#)

[Volume and Capacity](#)

[Weight and Mass](#)

[Temperature](#)

[Angular Measurements](#)

[Power Measurements](#)

[Energy Measurements](#)

[Time Measurements](#)

[Density Measurements](#)

[Velocity Measurements](#)

[Money Conversions](#)

[Other Measures](#)

[Tables](#)

Density Measurements

The density of a substance is the amount of mass it contains for each unit of its volume. The density is calculated by dividing its mass by its volume. In the metric system it is usually in terms of grams per cubic centimeter or kilograms per cubic meter. For example, a piece of iron with a mass of 780 grams and a volume of 100 cubic centimeters has a density of 7.8 grams per cubic centimeter. In the customary system, density is measured in pounds per cubic foot.

Note that the abbreviations for the units below are shown in square brackets.

1 kilogram per cubic meter [kg/m³] = 1000 grams per cubic meter [g/m³]
= 10 grams per cubic centimeter [g/cm³]
= 0.001 megagrams per cubic meter [Mg/m³]
= 436.9957240 grains per cubic foot [gr/ft³]
= 0.9988473692 ounces per cubic foot [oz/ft³]
= 0.06242796057 pounds per cubic foot [lb/ft³]
= 3.6127292e-5 pounds per cubic inch [lb/in³]
= 8.345404452e-3 pounds per US gallon [lb/USgal]
= 1.002241285e-2 pounds per UK gallon [lb/UKgal]
= 1.940320331e-3 slug per cubic foot [slug/ft³]

Specific Volume units:

1 cubic meter per kilogram [m³/kg] = 1000 cubic meter per megagram [m³/Mg]
= 0.001 cubic meter per gram [m³/g]
= 0.00228835191 cubic foot per grain [ft³/gr]
= 1.001153961 cubic foot per ounce [ft³/oz]
= 16.01846337 cubic foot per pound [ft³/lb]
= 27679.90471 cubic inch per pound [in³/lb]
= 119.8264273 US gallon per pound [USgal/lb]
= 99.77637266 UK gallon per pound [UKgal/lb]
= 515.3788184 cubic foot per slug [ft³/slug]

Related Topics

[Length and Distance](#)

[Surface or Area](#)

[Volume and Capacity](#)

[Weight and Mass](#)

[Temperature](#)

[Angular Measurements](#)

[Power Measurements](#)

[Energy Measurements](#)

[Time Measurements](#)

[Force Measurements](#)

[Velocity Measurements](#)

[Money Conversions](#)

[Other Measures](#)

[Tables](#)

Velocity Measurements

Velocity is the rate at which a body moves in space in a given direction. Velocity is expressed in terms of distance and time, such as miles per hour or meters per second. There is an important difference between speed and velocity. Speed indicates the rate in any given direction. Velocity indicates the rate in one fixed direction. Mathematically it is a vector quantity since it possesses both speed and direction.

Note that the abbreviations for the units below are shown in square brackets.

1 meter per second [m/s]	= 100 centimeters per second [cm/s]
	= 60 meters per minute [m/min]
	= 3600 meters per hour [m/h]
	= 0.001 kilometers per second [km/s]
	= 0.06 kilometers per minute [km/min]
	= 3.6 kilometers per hour [km/h]
	= 39.37007874 inches per second [in/s]
	= 2362.204724 inches per minute [in/min]
	= 141732.2834 inches per hour [in/h]
	= 3.280839895 feet per second [ft/s]
	= 196.8503937 feet per minute [ft/min]
	= 11811.02362 feet per hour [ft/h]
	= 1.093613298 yard per second [yd/s]
	= 65.6167979 yard per minute [yd/min]
	= 3937.007874 yard per hour [yd/h]
	= 6.213711922e-4 miles per second [mi/s]
	= 0.03728227153 miles per minute [mi/min]
	= 2.236936292 miles per hour [mi/h]
	= 1.943844492 knots [kn]
	= 3.016955289e-3 Mach number [Ma]

Note that Mach number varies with temperature. The conversion value given is for dry air at 0°C

Related Topics

[Length and Distance](#)

[Surface or Area](#)

[Volume and Capacity](#)

[Weight and Mass](#)

[Temperature](#)

[Angular Measurements](#)

[Power Measurements](#)

[Energy Measurements](#)

[Time Measurements](#)

[Force Measurements](#)

[Density Measurements](#)

[Money Conversions](#)

[Other Measures](#)

[Tables](#)

Money Conversions

An American car dealer who buys Japanese cars gets yen to pay for them by buying them from a bank at the current exchange rate. An exchange rate is the price of one nation's currency expressed in terms of another country's currency. If the exchange rate were 140 yen to the dollar, for example, the American would have to buy \$8571.43 in yen to pay for a Japanese car that cost 1.2 million yen.

Exchange rates are determined in foreign exchange markets. The rates vary from day to day in relation to international demand for various currencies. This is known as a floating exchange rate. However, most countries do not allow their currencies to float freely. Each country has holdings of foreign currency. If the exchange rate falls too low, the government will use some of its foreign holdings to buy enough of its own currency to stabilize the exchange rate.

Related Topics

[Length and Distance](#)

[Surface or Area](#)

[Volume and Capacity](#)

[Weight and Mass](#)

[Temperature](#)

[Angular Measurements](#)

[Power Measurements](#)

[Energy Measurements](#)

[Time Measurements](#)

[Force Measurements](#)

[Density Measurements](#)

[Velocity Measurements](#)

[Other Measures](#)

[Tables](#)

Other Measurements

Measurement units for length, temperature, time, and mass are called basic measurements. These units can be combined into other measurements called derived measurements. For example, area is one length times another to form square units.

Some measurements combine different units. The measurement of speed is derived by dividing distance traveled by time to travel. It tells the distance traveled in a certain time. For example, miles per hour or meters per second. Another derived measurement is pressure, which is the force acting on a unit of area. Pressure units include pounds per square inch and dynes per square centimeter.

Related Topics

[Length and Distance](#)

[Surface or Area](#)

[Volume and Capacity](#)

[Weight and Mass](#)

[Temperature](#)

[Angular Measurements](#)

[Power Measurements](#)

[Energy Measurements](#)

[Power Measurements](#)

[Time Measurements](#)

[Force Measurements](#)

[Density Measurements](#)

[Velocity Measurements](#)

[Tables](#)

Convert It! Tables

This index lists all Help topics available for Convert It! tables. Index items are arranged alphabetically. Use the scroll bar to see entries not currently visible in the Help window.

[Metric System](#)

[Temperature Conversions](#)

[Metric to Customary Conversion Factors](#)

[Customary to Metric Conversion Factors](#)

[General Conversion Factors](#)

Metric System Unit Tables

Metric System Base Units

Quantity measured	Unit	Abbreviation
Length	meter	m
Mass	kilogram	kg
Time	second	s
Electric current	ampere	A
Temperature	degree Kelvin	K
Luminous intensity	candela	cd
Amount of substance	mole	mol

Metric Decimal Multiples and Sub multiples

Multiples and sub multiples	Prefixes	Symbols
1.0e18	exa	E
1.0e15	pecta	P
1.0e12	tera	T
1.0e9	giga	G
1.0e6	mega	M
1.0e3	kilo	k
1.0e2	hecto	h
10	deca	da
1.0e-1	deci	d
1.0e-2	centi	c
1.0e-3	milli	m
1.0e-6	micro	μ
1.0e-9	nano	n
1.0e-12	pico	p
1.0e-15	femto	f
1.0e-18	atto	a

Related Topics

[Length and Distance](#)

[Surface or Area](#)

[Volume and Capacity](#)

[Weight and Mass](#)

[Temperature Conversions](#)

[Metric to Customary Conversion Factors](#)

[Customary to Metric Conversion Factors](#)

[General Conversion Factors](#)

Temperature Conversions

Temperature Formulas

$$^{\circ}\text{F} = 9/5 (^{\circ}\text{C}) + 32$$

$$\text{Fahrenheit temperature} = 1.8 (\text{temperature in Kelvin}) - 459.67$$

$$^{\circ}\text{C} = 5/9 [(^{\circ}\text{F}) - 32]$$

$$\text{Celsius temperature} = \text{temperature in Kelvin} - 273.15$$

$$\text{Fahrenheit temperature} = 1.8 (\text{Celsius temperature}) + 32$$

Related Topics

[Temperature](#)

[Metric Tables](#)

[Metric to Customary Conversion Factors](#)

[Customary to Metric Conversion Factors](#)

[General Conversion Factors](#)

Metric to Customary Conversions Factors

To obtain	Multiply	by
Inches	Centimeters	0.3937007874
Feet	Meters	3.280839895
Yards	Meters	1.093613298
Miles	Kilometers	0.6213711922
Ounces	Grams	3.527396195e-2
Pounds	Kilograms	2.204622622
Gallons	Liters	0.2641720524
Fluid ounces	Milliliters (cc)	3.381402270e-2
Square inches	Sq. Centimeters	0.1550003100
Square feet	Square meters	10.76391042
Square yards	Square meters	1.195990046
Cubic inches	Milliliters (cc)	6.102374409e-2
Cubic feet	Cubic meters	35.31466672
Cubic yards	Cubic meters	1.307950619

Related Topics

[Length and Distance](#)

[Surface or Area](#)

[Volume and Capacity](#)

[Weight and Mass](#)

[Metric Tables](#)

[Temperature Conversions](#)

[Customary to Metric Conversion Factors](#)

[General Conversion Factors](#)

Customary to Metric Conversions Factors

To obtain	Multiply	by*
Microns	Mils	25.4
Centimeters	Inches	2.54
Meters	Feet	0.3048
Meters	Yards	0.9144
Kilometers	Miles	1.609344
Grams	Ounces	28.34952313
Kilograms	Pounds	0.45359237
Liters	Gallons	3.785411784
Milliliters (cc)	Fluid ounces	29.57352956
Sq. Centimeters	Square inches	6.4516
Square meters	Square feet	0.09290304
Square meters	Square yards	0.83612736
Milliliters (cc)	Cubic inches	16.387064
Cubic meters	Cubic feet	2.831684659e-2
Cubic meters	Cubic yards	0.764554858

* Boldface numbers are exact; others are given to 10 significant digits.

Related Topics

[Length and Distance](#)

[Surface or Area](#)

[Volume and Capacity](#)

[Weight and Mass](#)

[Metric Tables](#)

[Temperature Conversions](#)

[Metric to Customary Conversion Factors](#)

[General Conversion Factors](#)

General Conversions Factors

* Boldface numbers are exact.

To obtain	Multiply	by*
Pressure:		
Atmospheres	Ft. of water @4°C	2.950e-2
Atmospheres	In. of mercury @ 0°C	3.342e-2
Atmospheres	Pounds per sq. inch	6.804e-2
Ft. of water @4°C	Atmospheres	33.90
In. of mercury @0°C	Pounds per sq. inch	2.036
Force and Energy:		
BTU	Foot-pounds	1.285e-3
BTU	Joules	9.480e-4
Joules	BTU	1054.8
Joules	Foot-pounds	1.35582
Ergs	Foot-pounds	1.356e7
Foot-pounds	Horsepower-hours	1.98e6
Foot-pounds	Kilowatt-hours	2.655e6
Power:		
Foot-pounds per min.	Horsepower	3.3e4
Horsepower	Foot-pounds per sec	1.818e-3
Watts	BTU per min.	17.5796
Kilowatts	BTU per min.	1.758e-2
Kilowatts	Foot-pounds per min.	2.26e-5
Kilowatts	Horsepower	0.745712
Length and Distance:		
Feet	Miles	5280
Miles	Feet	1.894e-4
Nautical miles	Miles	0.86897624
Angular:		
Degree (angle)	Radians	57.2958
Radians	Degrees (angle)	1.745e-2
Luminance:		
Candela/square cm	Candela/square meter	0.0001
Candela/square in	Candela/square meter	0.00064516
Candela/square ft	Candela/square meter	0.09290304
Candela/square yd	Candela/square meter	0.83612736
Apostilb (Blondel)	Candela/square meter	3.141592654
Lambert	Candela/square meter	0.0003141592654
Foot Lambert	Candela/square meter	0.2918635079

Note that a Candela per square centimeter (cd/cm²) is called a Stilb (sb) and a Candela per square meter (cd/m²) is called a Nit (nt).

Luminous Flux:

Lumen/square cm	Lumen/square meter	0.0001
Nox	Lumen/square meter	1000
Lumen/square in	Lumen/square meter	0.00064516
Lumen/square ft	Lumen/square meter	0.09290304
Lumen/square yd	Lumen/square meter	0.83612736

Note that a Lumen per square centimeter (lm/cm^2) is called a Phot (ph), a Lumen per square meter (lm/m^2) is called a Lux (lx) and a Lumen per square foot (lm/ft^2) is called a Foot candle.

Mass Flow Rate:

Grams per second	Kilograms per second	1000	
Grams per minute	Kilograms per second	60000	
Grams per hour	Kilograms per second	3600000	
Kilograms per minute	Kilograms per second	60	
Kilograms per hour	Kilograms per second	3600	
Megagrams per sec	Kilograms per second	0.001	
Megagrams per minute	Kilograms per second	0.06	
Megagrams per hour	Kilograms per second	3.6	
Pounds per second	Kilograms per second	2.204622622	
Pounds per minute	Kilograms per second	132.2277357	
Pounds per hour	Kilograms per second	7936.641438	
Ounces per second	Kilograms per second	35.27396195	
Ounces per minute	Kilograms per second	2116.437717	
Ounces per hour	Kilograms per second	126986.263	
Slugs per second	Kilograms per second	0.06852176585	
Slugs per minute	Kilograms per second	4.111305951	
Slugs per hour	Kilograms per second	246.678357	
Tons per second	Kilograms per second	9.84206527e-4	
Tons per minute	Kilograms per second	0.05905239165	
Tons per hour	Kilograms per second	3.543143499	

Volume Flow Rate:

Cubic cm per second	Cubic meter per second	1000000	
Cubic cm per minute	Cubic meter per second	60000000	
Cubic cm per hour	Cubic meter per second	3600000000	
Liter per second	Cubic meter per second	1000	
Liter per minute	Cubic meter per second	60000	
Liter per hour	Cubic meter per second	3600000	
Cubic meter per min	Cubic meter per second	60	
Cubic meter per hour	Cubic meter per second	3600	
Cubic inch per second	Cubic meter per second	61023.74409	
Cubic inch per minute	Cubic meter per second	3661424.645	
Cubic inch per hour	Cubic meter per second	219685478.7	
Cubic foot per second	Cubic meter per second	35.31466672	
Cubic foot per minute	Cubic meter per second	2118.880003	
Cubic foot per hour	Cubic meter per second	127132.8002	
US gallon per second	Cubic meter per second	264.1720523	
US gallon per minute	Cubic meter per second	15850.32314	
US gallon per hour	Cubic meter per second	951019.3884	
UK gallon per second	Cubic meter per second	219.9692483	
UK gallon per minute	Cubic meter per second	13198.15489	
UK gallon per hour	Cubic meter per second	791889.2939	

Acceleration:

Centimeters/second ²	Meter per second ²	100	
Kilometers/(hr sec)	Meter per second ²	3.6	
Feet per second ²	Meters per second ²	3.280839895	
Feet per hour ²	Meters per second ²	42519685.04	
Miles per hour per sec	Meters per second ²	2.236936292	

Angular Velocity:

Revolution per second	Radians per second	0.1591549431	
-----------------------	--------------------	--------------	--

Revolution per minute		Radians per second	9.549296585
Degrees per second	Radians per second	57.29577951	
Grades per second	Radians per second	63.66197723	

Angular Acceleration:

Revolution per second ²		Radians per second ²	0.1591549431
Rev per min per sec	Radians per second ²	9.549296585	
Degrees per second ²	Radians per second ²	57.29577951	
Grades per second ²	Radians per second ²	63.66197723	

Related Topics

[Length and Distance](#)

[Surface or Area](#)

[Volume and Capacity](#)

[Weight and Mass](#)

[Surface and Area](#)

[Angular Measurements](#)

[Power Measurements](#)

[Energy Measurements](#)

[Pressure Measurements](#)

[Time Measurements](#)

[Other Measures](#)

[Metric Tables](#)

[Temperature Conversions](#)

[Metric to Customary Conversion Factors](#)

[Customary to Metric Conversion Factors](#)

Control Minimize

Reduces the Convert It! window to a small icon at the bottom on the screen.

For mouse users, clicking the Minimize icon is the same as choosing Control Minimize.

- » Minimizing is useful when you are running another application at the same time as Convert It!.
- » Appears only on the Control menu for the application.
- » You can restore a minimized window to its former size by using the Control Restore command.

Minimize Icon



Mouse users can click the Minimize icon to shrink the Convert It! window to a small icon.

- » As a icon, the application remains in memory but does not take up room on your desktop.
- » Clicking the Minimize icon has the same effect as choosing the Control Minimize command.
- » To restore the Convert It! window choose Control Restore.
With the mouse, double-click the Convert It! icon.

Control Restore


Restores the Convert It! window to the size and location it had before you chose the Control Minimize command.


With the mouse, double-click the Convert It! icon.

Title Bar **Convert It!**

The bar across the top of the window displays the application name. You can move a window by clicking on the title bar and dragging the window to a new location while holding the left mouse button down. When you release the button the window will be redrawn in the new location.

Control Move

Displays a four-headed arrow  that you can use with the direction keys to reposition a window. This command is unavailable if the window is enlarged to maximum size. Select the Control Move command to begin moving a window by:

Clicking the Control-menu box, , then click Move.
- or -
Press Alt, Spacebar, M.

Moving a Window or Dialog Box



Mouse techniques:

Drag the window or dialog box title bar.

Note: Not all dialog boxes have title bars.




Keyboard techniques:

1. If the borders aren't visible, restore the window to display them.
2. Press Alt, Spacebar, M.
3. Press the direction keys to position the outline of the window.
4. Press Enter to move the window.

Control Close

Closes the active window. If a dialog box is open and has a Control menu, choosing this command closes the dialog box.

For mouse users, double-clicking the Control-menu box, , is the same as choosing Control Close. Choosing Control Close is the same as choosing File Exit. You can also close the window by pressing Alt+F4.

Control Switch To

Lists all the open applications.

Switch To

Activates the selected application.

End Task

Closes the selected application

Cancel

Closes the Task List window.

Tile

Maximizes all open applications and sizes them so that the upper-left portion of each window is visible.

Arrange Icons

Arranges the icons of all minimized applications across the bottom of the screen.

How to Register Convert It! 2.0

Convert It! 2.0 Registration Form/Invoice. Please send to:
SMI Corp., P.O. Box 582221, Tulsa, OK 74158

Ordering by check: You can order by sending a check and this order form to the address above. To print this order form, click on Print Topic in the File pull-down menu. Alternately, you can print the ASCII text file ORDER.TXT (distributed with Convert It!).

Credit card ordering: You can order with Master Card or Visa from SMI Corp. by calling (918) 560-9536 from 8:00 am to 5:00 PM central time Monday through Friday. You can also mail credit card orders by filling out this order form and mailing it to the above address.

Site licenses: Site licenses are available for Convert It!. Call (918) 560-9536 to find out about the details.

Convert It! 2.0 quantity _____ @ \$10.00 ea. = _____
Upgrade from prior version _____ @ \$5.00 ea. = _____
License number(s) _____
Disk (optional) __ 3.5" __ 5.25" add \$2.50 + _____
Oklahoma residents add 7.5% sales tax + _____
Orders outside US or Canada add \$5.00 + _____
Total payment _____

Payments must be in US dollars drawn on a US bank. Prices are subject to change without notice.

Name: _____ Date: _____
Company: _____
Address: _____

City, State, Zip: _____ Country: _____
Day Phone: _____ Evening Phone: _____
Electronic mail address: _____

For credit card orders, please fill out the following:

___ VISA ___ MasterCard
Name on card: _____
Card number: _____
Exp. date: _____ Signature: _____
Comments:

Convert It! Glossary

absolute zero

application

command button

control menu

control-menu box

default button

dialog box

direction keys

drag

icon

insertion point

mass

menu

non-Windows application

option buttons

scroll arrow

scroll bar

scroll box

selection cursor

shrink

task list

text box

title bar

weight

window

absolute zero

a temperature characterized by a complete absence of heat. No molecular motion. -
273.15°C or -459.67°F

application

a computer program used for a particular kind of work, such as word processing. This term is often used interchangeably with "program".

command button

a large button in a window or dialog box that carries out or cancels the selected action. Two common command buttons are OK and Cancel. The button that carries out the action will often have a label that describes the action (for example, open, create, install). Choosing a command button sometimes causes another dialog box to appear.

control menu

The menu farthest to the left in the title bar, indicated by a Spacebar icon. The Control menu appears on every application that runs in a window and on some non-Windows applications. Document windows, icons, and some dialog boxes also have Control menus.

For application windows, document windows, icons, and dialog boxes, Control menu commands move, size, and close windows. You can also switch to Task List by using the Control menu. For non-Windows applications, the Control menu commands transfer information and perform other functions, depending on the application.

control-menu box



The icon (symbolized Spacebar) that appears farthest to the left in the title bar and that opens the Control menu for the window.

default button

The command button in some dialog boxes that is automatically selected or chosen by Windows as the most logical or safest choice. The default button has a bold border, indicating that it will be chosen if you press enter. You can override a default button by choosing Cancel or another command button.

dialog box

A rectangular box that either requests or provides information. Many dialog boxes present options for you to choose among before Windows or the application can carry out the command. Some dialog boxes present warnings or explain why a command can't be completed.

direction keys ↑ ↓ ← →

The four arrow keys on your computer keyboard. These keys move the cursor or pointer to locations you choose on screen. Each direction key has an arrow on it to show which direction the cursor or pointer will move. Each arrow key is named for the direction the key points: the Up Arrow key, the Down Arrow key, the Left Arrow key, and the Right Arrow key.

drag

Hold down the mouse button and move the mouse.

icon

A graphical representation of a disk drive, a directory, a group, an application, a document, and so on. You can enlarge an application icon to a window when you want to use the application.

insertion point |

The place where text will be inserted when you type. The insertion point usually appears as a flashing vertical bar in an application's window or dialog box. The text you type appears to the left of the insertion point which is pushed to the right as you type.

mass

The property of a body that is a measure of its inertia, that is commonly taken as a measure of the amount of material it contains and causes it to have weight in a gravitational field.

menu

A list of available commands in a application window. Menu names appear in the menu bar near the top of the window. You may use a command on a menu by selecting the menu name, then choosing the command you want.

non-Windows application

Applications that were not designed to run in Windows. Non-Windows applications do not necessarily conform to Windows user interface standards.

option buttons

A small round or diamond shaped button. That appears in a dialog box and is used to select an option within a group of related options. You can select only one option.

scroll arrow

An arrow on either end of a scroll bar, that is used to change the contents of a window or list box or change a value. Clicking the arrow moves the contents one line or one unit. Pressing a scroll arrow scrolls the contents continuously.

scroll bar

A bar that may appear in a dialog box that will allow a value to be changed within a certain range. Or may also appear to allow you to scroll through a window that has more lines than can be shown in the window.

scroll box

A small box in a scroll bar that shows the position of what is currently in the window or list box or value.

selection cursor



The marking device that shows where you are in a window menu or dialog box and what you have selected. the selection cursor can appear as a highlight or as a dotted rectangle around the text in a dialog box option.

shrink

To reduce a window to an icon at the bottom of the desktop using the Minimize button or the Minimize command. The document or application remains open (or running), and can be the active application or document.

task list

A window that shows all the applications you have running and lets you switch among them. You can open the Task List window by choosing Switch To from the Control menu or by pressing Ctrl+Esc.

text box

A type of box within a dialog box where you type information needed to carry out a command. When the dialog box appears, the text may be blank or it may contain text.

title bar

The horizontal bar at the top of the window that contains the title of the window or dialog box. On many windows, the title bar also contains a Control-menu box and Maximize and Minimize buttons.

weight

The force with which a body is attracted in a gravitational field which is equal to the product of the mass by the local gravitational acceleration.

window

A rectangular area on your screen in which you view an application or document. You can open, close, and move windows, and change the size of most windows. You can open several windows on the desktop at the same time and you can shrink windows to icons or enlarge them to fill the entire desktop.

